



## 4T Freezer Lorry Box Truck Diesel Engine Euro 5 Standard

Our Product Introduction

### Basic Information

- Place of Origin: China
- Brand Name: DONGFENG
- Certification: CCC
- Model Number: EQ1060TJ20D3
- Minimum Order Quantity: 1 units
- Price: USD15000~25000/unit
- Packaging Details: naked, with wax; shipped by container, ro-ro ship, train or long vehicle
- Delivery Time: depends on order quantity
- Payment Terms: T/T, L/C, Western Union, MoneyGram
- Supply Ability: 1000units/month



### Product Specification

- Overall Size: 5820x1940x2080mm
- Driving Form: 4\*2driving
- Curb Weight: 3740kg
- Rated Loading: 5000kg
- Wheel Base: 3300mm
- Frong& Rear Track: 1506/1466mm
- Maximum Speed: 90km/h
- Fuel Type: Diesel Engine
- Engine Type: CY4100Q
- Max. Power: 82hp
- Maximum Torque: 230N.m
- Displacement: 3.7L
- Emission Level: Euro 5
- Cab Type: Single Row Cab, 2passengers
- Tyres Size: 7.00R16 Steel Tire



### More Images



for more products please visit us on [battery-generator.com](http://battery-generator.com)

## Product Description

### 4T Loading Light Refrigerator Truck, Diesel Freezer Refrigerated Truck

#### Product Detailed Specification:

|  |                  |   |             |
|--|------------------|---|-------------|
| Vehicle parameters-- 4T Loading                  |                  |   |             |
| Overall dimensions                               | 5820x1940x2080mm | Curb weight   | 3740kg      |
| Van Dimentstion                                  | 4000X1900X1900mm | Loading capacity  | 5000kg      |
| Chassis parameters                               |                  |   |             |
| Chassis model                                    | EQ1060TJ20D3     | Chassis brand   | DONGFENG    |
| Overall dimensions                               | 5820x1940x2080mm | Wheel base  | 3300mm      |
| Front/rear wheel track                           | 1506/1466mm      | Front/rear suspension   | 1032/1488mm |
| Approach/departure angle                         | 19/15°           | Maximum speed   | 90km/h      |
| Chassis Manufacturer Dongfeng Automobile Co.,Ltd |                  |   |             |
| Cab  | Configuration    | Single row cab,allowable 3 passengers,Air Conditioner           |             |
|  | Color            | White,other color is optional                                   |             |
| Engine   | Model            | CY4100Q   |             |
|  | Emission         | Euro 3  |             |
|  | Type             | in-line,4-stroke,water-cooled,turbo inter-cooling,diesel engine |             |
|  | Rated power      | 82hp,rated power speed 3200rpm                                  |             |
|  | Displacement     | 3707ml  |             |
|  | Max.torque       | 230N.m  |             |
| Tire   | Manufacturer     | Dongfeng Chaoyang Diesel Power Co. Ltd.                         |             |
|  | Size             | 7.00R16 steel tire  |             |
|  | Number           | 6+1 nos   |             |

#### Refrigerator Truck Description:

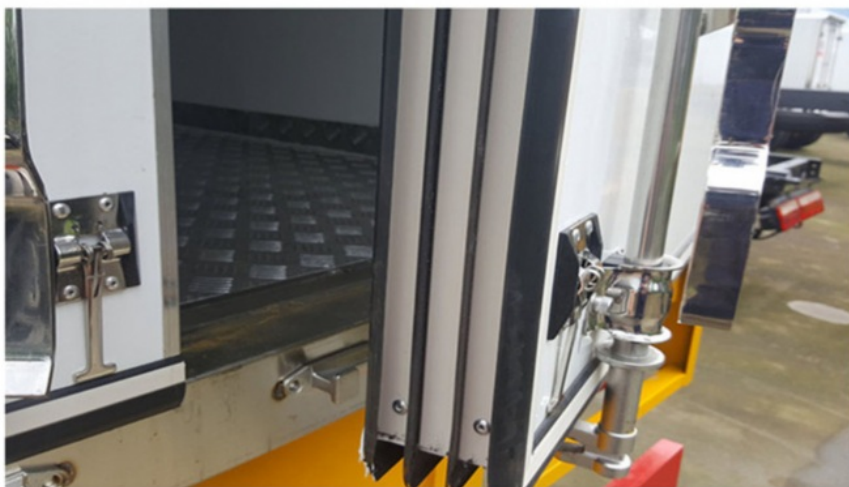
- The interior and exterior fabrics of the cabin are made of \*\* new nano fiberglass (non light absorbing, good insulation, strong hardness, and oxidation resistance), with a thickness of 8cm. The inner frame of the cabin is made of high-quality light steel profiles treated with rust prevention, and the insulation material is filled with polyurethane foam without gaps. The bottom of the cabin is made of aluminum alloy patterned plate or flat nano fiberglass. The cabin is made of galvanized stainless steel with corners, thickened aluminum alloy with edges, and the rear door frame is made of stainless steel, Thickened stainless steel rear door hinge and lock components, with LED lighting and side marker lights inside the cabin

#### Products HD pictures:





8 cm Van Body Thickness



#### Article Seal Waterproof Compartment



#### Stainless Steel Tail Box



#### Packing and Shipping:

#### FQA:

Q:How about the delivery time?

A: Most of our trucks are made to new order, so the delivery time is usually 20~45days.

Q:How about shipping ?

A: Big size trucks always shipping by RORO or Bulk ship or flat bed container or open top container, small type can shipping by container ,

Pls contact us to get a shipping quotation .

Q: How many trucks does your factory produce per years?

A: Almost 3000 units one month.

Q: How about your product After-sales service system?

A: Our main export country have accepted after-sales service,some of country used the third department service.

Q: Do you accept Custom orders? What's is your MOQ order?

A: Yes, we do, our MOQ is depends on exact model, mostly is 1unit.

Q:Which country do you have exported to?

A: our special trucks can be found in many parts of the world, such as Russia, Ukraine,Uzbekistan,Jordan, Chile, Brazil, Thailand, Malaysia, Lebanon etc, and gain good reputation from local market.



**HaiNan SynYune EV Technology Co.,Ltd**



SYJackie@163.com



battery-generator.com

No. 4 Jipu Road, Xinyingwan District, Yangpu EDZ, Hainan Province